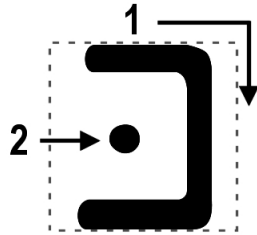


# Kaf Writing Practice

*“k” as in kite*  
*no dot – hard “ch” as in bach*



Handwriting practice lines for the Hebrew letter Kaf. Each line consists of a top blue dotted line, a middle blue dotted line, and a bottom blue dotted line. A vertical pink line is on the right side of the page.

Row 1: Six Kaf characters. The first five are hollow outlines. The sixth is a solid black letter with a dot in the center.

Row 2: Three hollow outline Kaf characters.

Row 3: Two hollow outline Kaf characters.

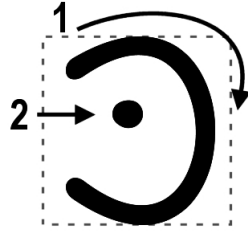
Row 4: One hollow outline Kaf character.

Row 5: Empty handwriting lines.

Row 6: Empty handwriting lines.

# Kaf Writing Practice

*“k” as in kite*  
*no dot – hard “ch” as in bach*



Handwriting practice lines for the Hebrew letter Kaf. Each line consists of a top blue dotted line, a middle blue dotted line, and a bottom blue dotted line. A vertical pink line is on the right side of the page.

Row 1: Five hollow Kaf characters followed by one solid black Kaf character.

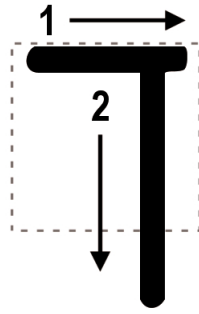
Row 2: Three hollow Kaf characters.

Row 3: Two hollow Kaf characters.

Row 4: One hollow Kaf character.

# Final Khaf Writing Practice

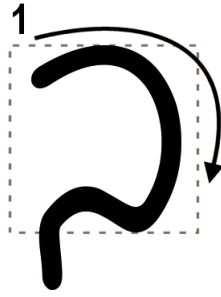
*“ch” as in bach*



Handwriting practice lines for the final Khaf character. The page features four rows of horizontal lines. The first row contains four hollow outlines of the character followed by one solid black character. The second row contains three hollow outlines. The third row contains two hollow outlines. The fourth row contains one hollow outline. A vertical pink line is positioned on the right side of the page.

# Final Khaf Writing Practice

*“ch” as in bach*



Handwriting practice lines for the final Khaf letter. The page features four rows of horizontal lines. The first row contains five letters: four hollow outlines for tracing and one solid black letter. The second row contains three hollow outlines. The third row contains two hollow outlines. The fourth row contains one hollow outline. A vertical pink line is positioned on the right side of the page.